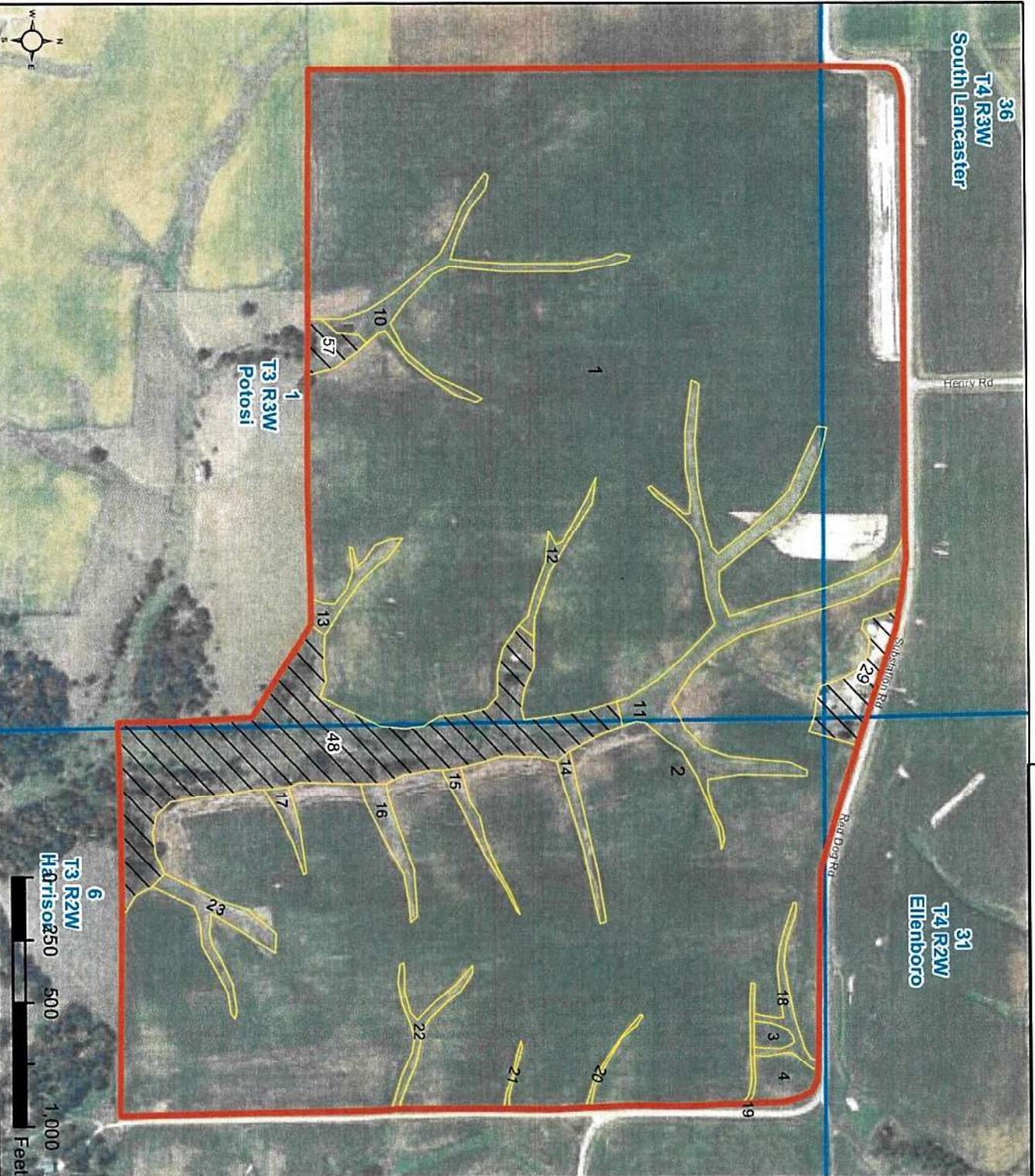


**Farm 5787**  
**Tract 1799**

2018 Program Year



CLU	Acres	HEL	Crop
1	124.27	HEL	
2	87.72	HEL	
3	0.31	HEL	
4	0.97	HEL	
10	2.0	HEL	
11	6.19	HEL	
12	0.5	HEL	
13	0.66	HEL	
14	0.61	HEL	
15	0.47	HEL	
16	0.81	HEL	
17	0.42	HEL	
18	0.69	HEL	
19	0.18	HEL	
20	0.11	HEL	
21	0.08	HEL	
22	0.59	HEL	
23	1.24	HEL	
29	1.8	UHEL	NC
48	14.61	UHEL	NC
57	0.75	UHEL	NC

Page Cropland Total: 227.82 acres

Map Created January 24, 2018

**Common Land Unit**  
**cropland\_indicator\_3CM**

- Non-Cropland
- Cropland
- Tract Boundary
- PLSS

NAP Imagery 2017

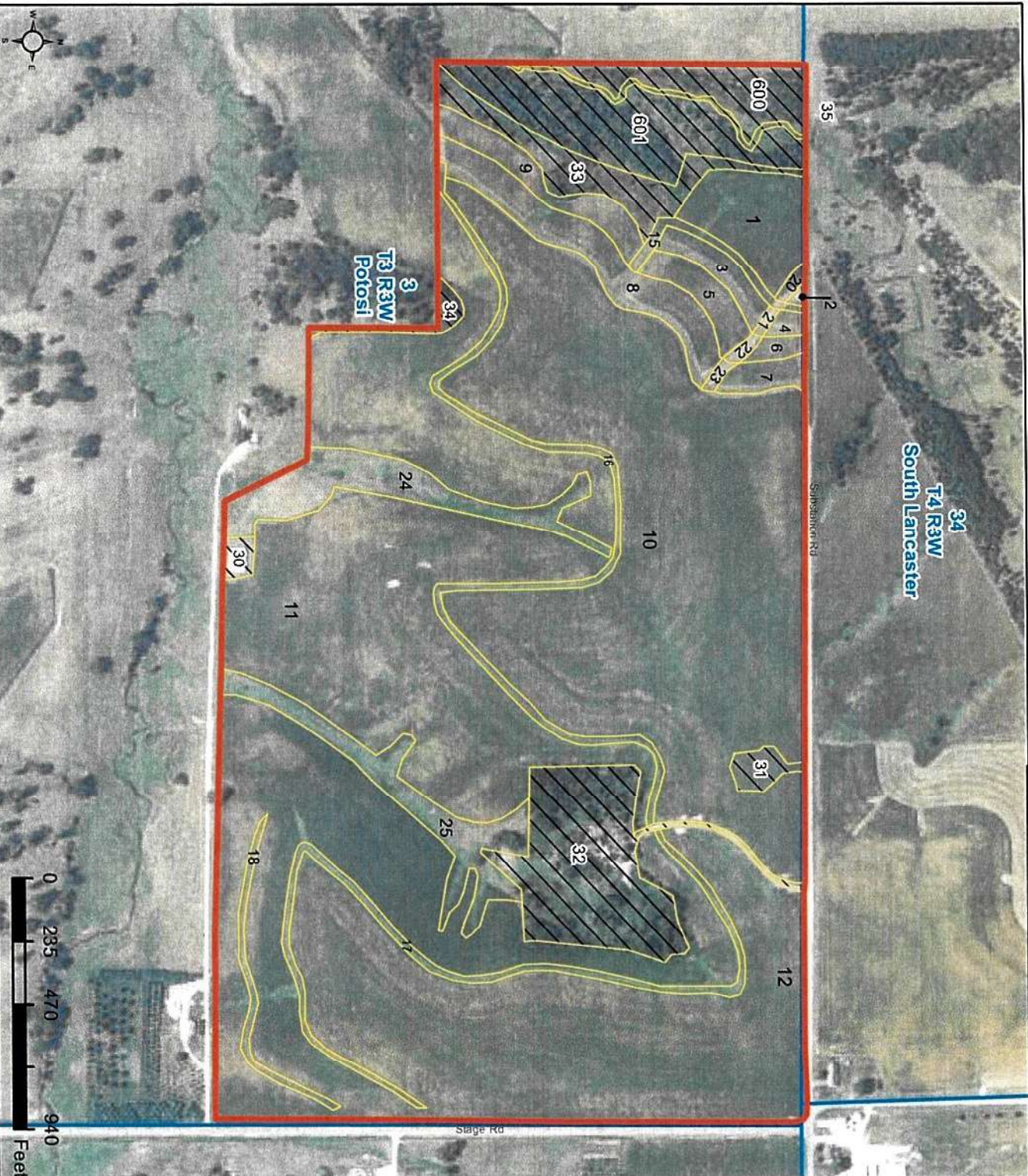
**Wetland Determination Identifiers**

- Restricted Use
- Limited Restrictions
- Exempt from Conservation
- Compliance Provisions

USDA FSA maps are for FSA Program administration only. This map does not represent a legal survey or reflect actual ownership; rather it depicts the information provided directly from the producer and/or the NAP imagery. The producer accepts the data as is and assumes all risks associated with its use. The USDA Farm Service Agency assumes no responsibility for actual or consequential damage incurred as a result of any user's reliance on this data outside FSA Programs. Wetland identifiers do not represent the size, shape, or specific determination of the area. Refer to your original determination (CPA-026 and attached maps) for exact boundaries and determinations or contact NRCS.

**Farm 7975**  
**Tract 10516**

2018 Program Year



CLU	Acres	HEL	Crop
1	3.27	HEL	
2	0.08	HEL	
3	1.09	HEL	
4	0.27	HEL	
5	1.32	HEL	
6	0.36	HEL	
7	0.8	HEL	
8	4.05	HEL	
9	2.02	HEL	
10	41.76	HEL	
11	34.28	HEL	
12	49.74	HEL	
15	0.64	HEL	
16	2.5	HEL	
17	2.2	HEL	
18	0.72	HEL	
20	0.18	HEL	
21	0.1	HEL	
22	0.16	HEL	
23	0.14	HEL	
24	4.17	HEL	
25	3.99	HEL	
30	0.4	UHEL	NC
31	0.65	UHEL	NC
32	7.96	UHEL	NC
33	3.28	UHEL	NC
34	0.54	UHEL	NC
35	0.54	UHEL	NC
600	2.97	HEL	NC
601	6.31	HEL	NC

Page Cropland Total: 153.84 acres

Map Created January 25, 2018  
**Common Land Unit**  
**cropland\_indicator\_3CM**

- Non-Cropland
- Cropland
- Tract Boundary
- PLSS
- N/AIP Imagery 2017
- Wetland Determination Identifiers
- Restricted Use
- Limited Restrictions
- Exempt from Conservation Compliance Provisions

USDA FSA maps are for FSA Program administration only. This map does not represent a legal survey or reflect actual ownership; rather it depicts the information provided directly from the producer and/or the N/AIP imagery. The producer accepts the data as is and assumes all risks associated with its use. The USDA Farm Service Agency assumes no responsibility for actual or consequential damage incurred as a result of any user's reliance on this data outside FSA Programs. Wetland identifiers do not represent the size, shape, or specific determination of the area. Refer to your original determination (CPA-026 and attached maps) for exact boundaries and determinations or contact NRCS.

**Farm 8251**  
**Tract 10791**

2018 Program Year

CLU	Acres	HEL	Crop
1	12.41	HEL	
2	0.5	HEL	
3	0.18	HEL	
5	7.68	UHEL	NC

Page Cropland Total: 13.09 acres



Map Created January 25, 2018  
**Common Land Unit**  
**cropland\_indicator\_3CM**

-  Non-Cropland
  -  Cropland
  -  Tract Boundary
  -  PLS
  -  NAIPLS
- Wetland Determination Identifiers**
-  Restricted Use
  -  Limited Restrictions
  -  Exempt from Conservation
  -  Compliance Provisions

USDA FSA maps are for FSA Program administration only. This map does not represent a legal survey or reflect actual ownership; rather it depicts the information provided directly from the producer and/or the NAIPLS imagery. The producer accepts the data as is and assumes all risks associated with its use. The USDA Farm Service Agency assumes no responsibility for actual or consequential damage incurred as a result of any user's reliance on this data outside FSA Programs. Wetland identifiers do not represent the size, shape, or specific determination of the area. Refer to your original determination (CPA-026 and attached maps) for exact boundaries and determinations or contact NRCs.

**Farm 8252**

**Tract 10792**

2018 Program Year

CLU	Acres	HEL	Crop
1	6.91	HEL	
2	53.06	HEL	
3	77.99	HEL	
4	0.77	HEL	
5	1.54	HEL	
6	0.58	HEL	
7	6.96	HEL	
8	40.16	HEL	
9	6.86	HEL	
10	3.98	HEL	
11	15.16	HEL	
12	0.94	HEL	
15	0.86	HEL	
16	1.07	HEL	
17	1.49	HEL	
18	0.08	HEL	
19	0.13	HEL	
20	0.21	HEL	
21	0.4	HEL	
22	0.02	HEL	
23	0.05	HEL	
24	0.22	HEL	
25	0.26	HEL	
26	0.09	HEL	
27	0.06	HEL	
28	0.93	HEL	
29	0.07	HEL	
30	0.26	HEL	
35	6.1	UHEL	NC
36	13.27	UHEL	NC

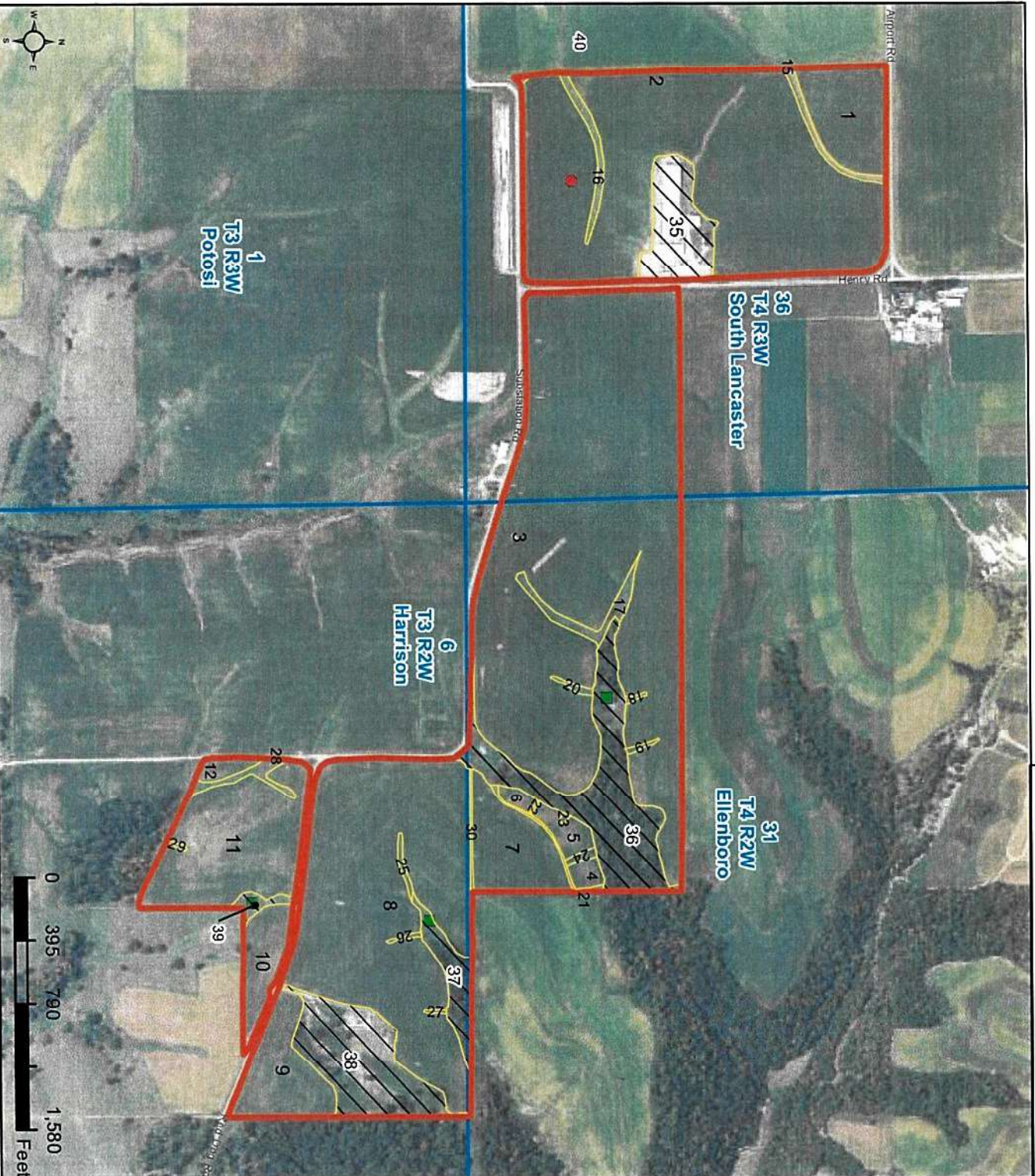
Page Cropland Total: 221.11 acres

Map Created January 25, 2018

**Common Land Unit**

**cropland\_indicator\_3CM**

- Non-Cropland
- Cropland
- Tract Boundary
- PLSS
- Wetland Determination Identifiers**
- NAIPL Imagery 2017
- Limited Restrictions
- Exempt from Conservation
- Compliance Provisions



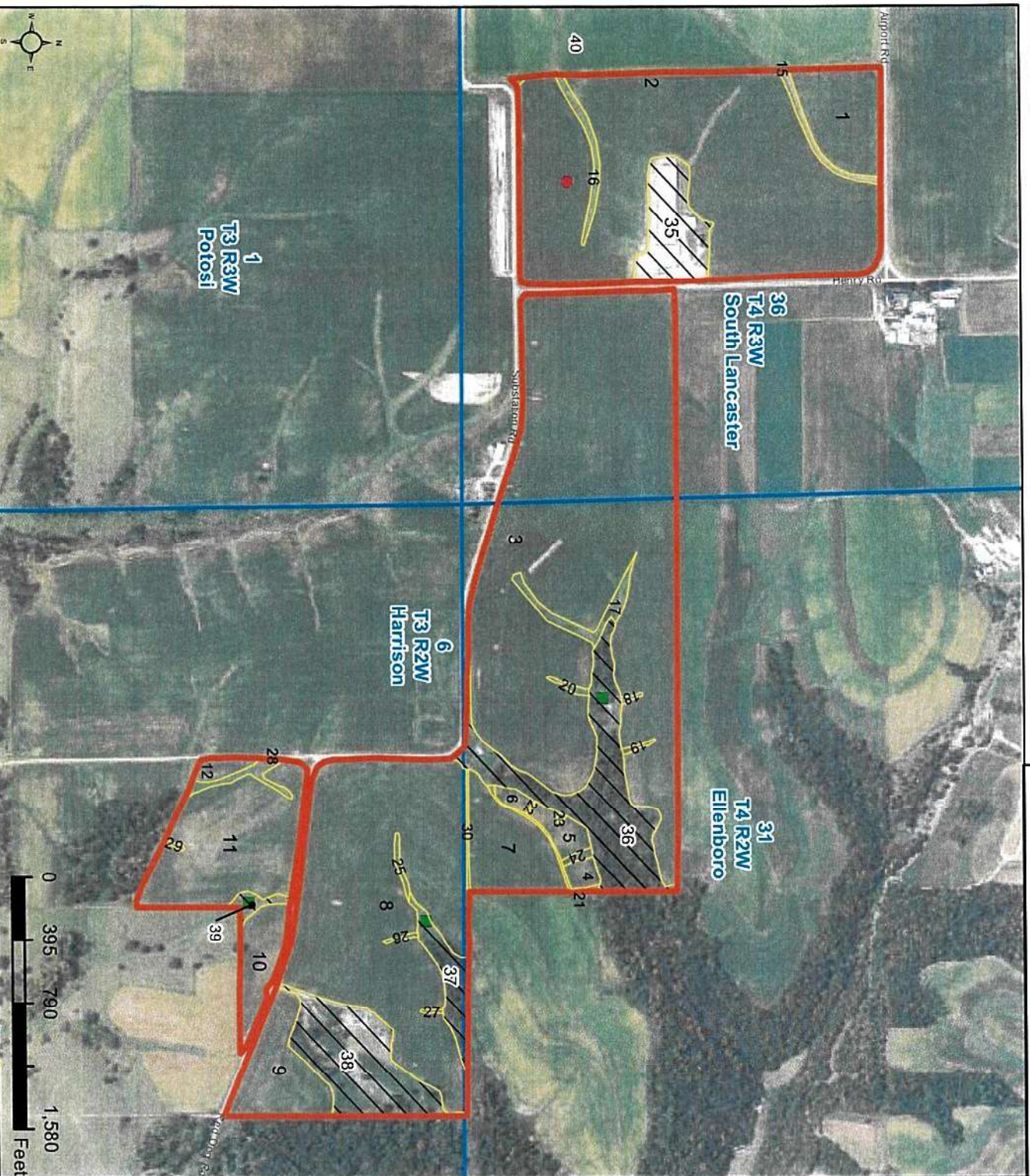
USDA FSA maps are for FSA Program administration only. This map does not represent a legal survey or reflect actual ownership; rather it depicts the information provided directly from the producer and/or the NAIPL imagery. The producer accepts the data as is and assumes all risks associated with its use. The USDA Farm Service Agency assumes no responsibility for actual or consequential damage incurred as a result of any user's reliance on this data outside FSA Programs. Wetland identifiers do not represent the size, shape, or specific determination of the area. Refer to your original determination (CPA-026 and attached maps) for exact boundaries and determinations or contact NRCS.

**Farm 8252**  
**Tract 10792**

2018 Program Year

CLU	Acres	HEL	Crop
37	2.94	UHEL	NC
38	10.23	UHEL	NC
39	0.75	UHEL	NC
40	0.15	UHEL	NC

Page Cropland Total: 221.11 acres



Map Created January 25, 2018  
**Common Land Unit**  
**cropland\_indicator\_3CM**

- Non-Cropland
  - Cropland
  - Tract Boundary
  - PLS
  - NAIPL Imagery 2017
- Wetland Determination Identifiers**
- Restricted Use
  - Limited Restrictions
  - Exempt from Conservation
  - Compliance Provisions

USDA FSA maps are for FSA Program administration only. This map does not represent a legal survey or reflect actual ownership; rather it depicts the information provided directly from the producer and/or the NAIPL imagery. The producer accepts the data as is and assumes all risks associated with its use. The USDA Farm Service Agency assumes no responsibility for actual or consequential damage incurred as a result of any user's reliance on this data outside FSA Programs. Wetland identifiers do not represent the size, shape, or specific determination of the area. Refer to your original determination (CPA-026 and attached maps) for exact boundaries and determinations or contact NRCS.

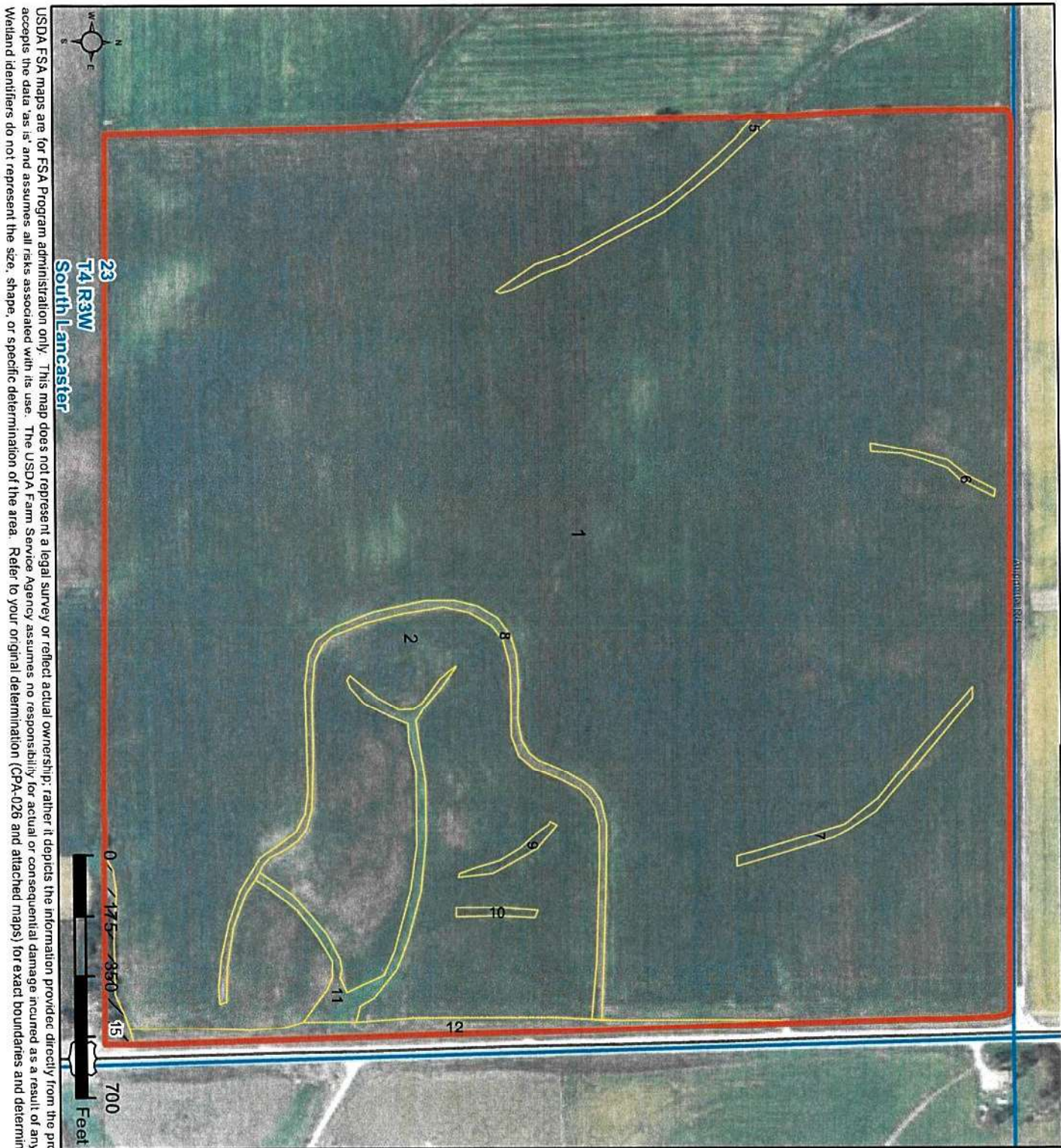
Entire Tract: IR / NI GR / EG unless  
 Name/Shares: otherwise  
 labeled

**Farm 8742**  
**Tract 1674**

2018 Program Year

CLU	Acres	HEL	Crop
1	133.5	HEL	
2	17.96	HEL	
5	0.62	HEL	
6	0.17	HEL	
7	0.49	HEL	
8	1.49	HEL	
9	0.18	HEL	
10	0.12	HEL	
11	1.29	HEL	
12	1.59	HEL	
15	0.46	UHEL	NC

Page Cropland Total: 157.41 acres



Map Created January 24, 2018  
**Common Land Unit**  
**cropland\_indicator\_3CM**

-  Non-Cropland
-  Cropland
-  Tract Boundary
-  PLS
-  PLS
-  NAI Imagery 2017
-  Wetland Determination Identifiers
-  Limited Restrictions
-  Exempt from Conservation
-  Compliance Provisions

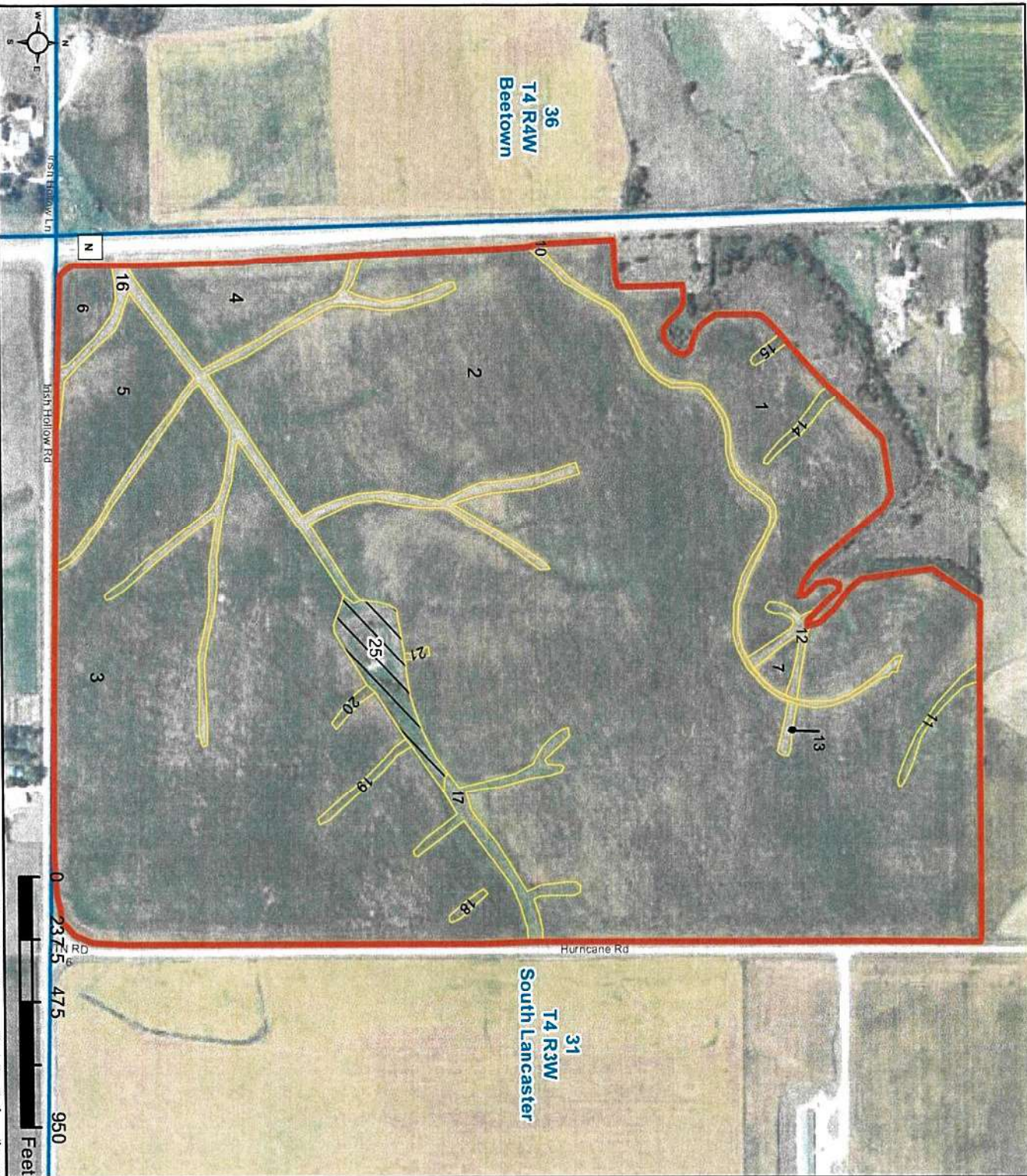
USDA FSA maps are for FSA Program administration only. This map does not represent a legal survey or reflect actual ownership; rather it depicts the information provided directly from the producer and/or the NAI imagery. The producer accepts the data as is and assumes all risks associated with its use. The USDA Farm Service Agency assumes no responsibility for actual or consequential damage incurred as a result of any user's reliance on this data outside FSA Programs. Wetland identifiers do not represent the size, shape, or specific determination of the area. Refer to your original determination (CPA-026 and attached maps) for exact boundaries and determinations or contact NRCS.

**Farm 9042**  
**Tract 1726**

2018 Program Year

CLU	Acres	HEL	Crop
1	13.04	HEL	
2	100.57	HEL	
3	51.38	HEL	
4	4.64	HEL	
5	5.91	HEL	
6	1.39	HEL	
7	0.45	HEL	
10	1.29	HEL	
11	0.37	HEL	
12	0.57	HEL	
13	0.18	HEL	
14	0.31	HEL	
15	0.14	HEL	
16	5.82	HEL	
17	1.67	HEL	
18	0.13	HEL	
19	0.31	HEL	
20	0.16	HEL	
21	0.06	HEL	
25	2.31	UHEL	NC

Page Cropland Total: 188.39 acres



USDA FSA maps are for FSA Program administration only. This map does not represent a legal survey or reflect actual ownership; rather it depicts the information provided directly from the producer and/or the NAIPI imagery. The producer accepts the data as is and assumes all risks associated with its use. The USDA Farm Service Agency assumes no responsibility for actual or consequential damage incurred as a result of any user's reliance on this data outside FSA Programs. Wetland identifiers do not represent the size, shape, or specific determination of the area. Refer to your original determination (CPA-026 and attached maps) for exact boundaries and determinations or contact NRCS.

Map Created January 24, 2018  
**Common Land Unit**  
**cropland\_indicator\_3CM**

-  Non-Cropland
  -  Cropland
  -  Tract Boundary
  -  PLS
  -  NAIPI Imagery 2017
- Wetland Determination Identifiers**
-  Restricted Use
  -  Exempt from Conservation
  -  Compliance Provisions

Entire Tract: IR / NI GR / FG unless  
 Name/Shares: \_\_\_\_\_ otherwise  
 labeled

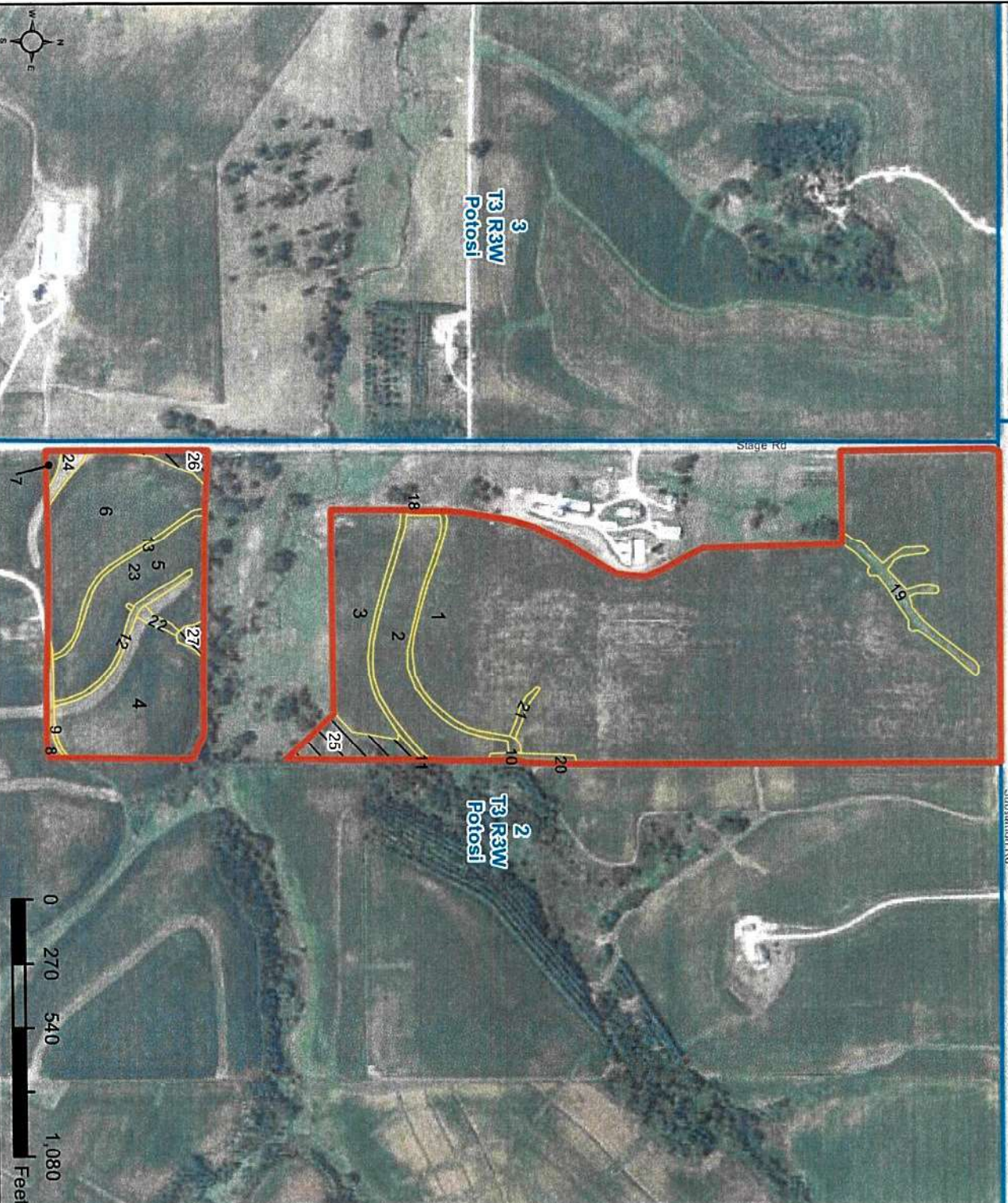
**Farm 9042**

**Tract 1892**

**2018 Program Year**

CLU	Acres	HEL	Crop
1	54.34	HEL	
2	4.29	HEL	
3	4.51	HEL	
4	5.79	HEL	
5	4.6	HEL	
6	6.38	HEL	
7	0.16	HEL	
8	0.18	HEL	
9	0.22	HEL	
10	0.64	HEL	
11	0.54	HEL	
12	0.46	HEL	
13	0.39	HEL	
18	0.06	HEL	
19	1.13	HEL	
20	0.31	HEL	
21	0.13	HEL	
22	0.16	HEL	
23	0.01	HEL	
24	0.35	HEL	
25	1.32	UHEL	NC
26	0.51	UHEL	NC
27	0.25	UHEL	NC

Page Cropland Total: 84.65 acres



USDA FSA maps are for FSA Program administration only. This map does not represent a legal survey or reflect actual ownership; rather it depicts the information provided directly from the producer and/or the NAI imagery. The producer accepts the data 'as is' and assumes all risks associated with its use. The USDA Farm Service Agency assumes no responsibility for actual or consequential damage incurred as a result of any user's reliance on this data outside FSA Programs. Wetland identifiers do not represent the size, shape, or specific determination of the area. Refer to your original determination (CPA-026 and attached maps) for exact boundaries and determinations or contact NRCs.

Map Created January 24, 2018  
**Common Land Unit**  
**cropland\_indicator\_3CM**

-  Non-Cropland
-  Cropland
-  Tract Boundary
-  PLS
-  NAI Imagery 2017

**Wetland Determination Identifiers**

-  Limited Restrictions
-  Restricted Use
-  Exempt from Conservation
-  Compliance Provisions

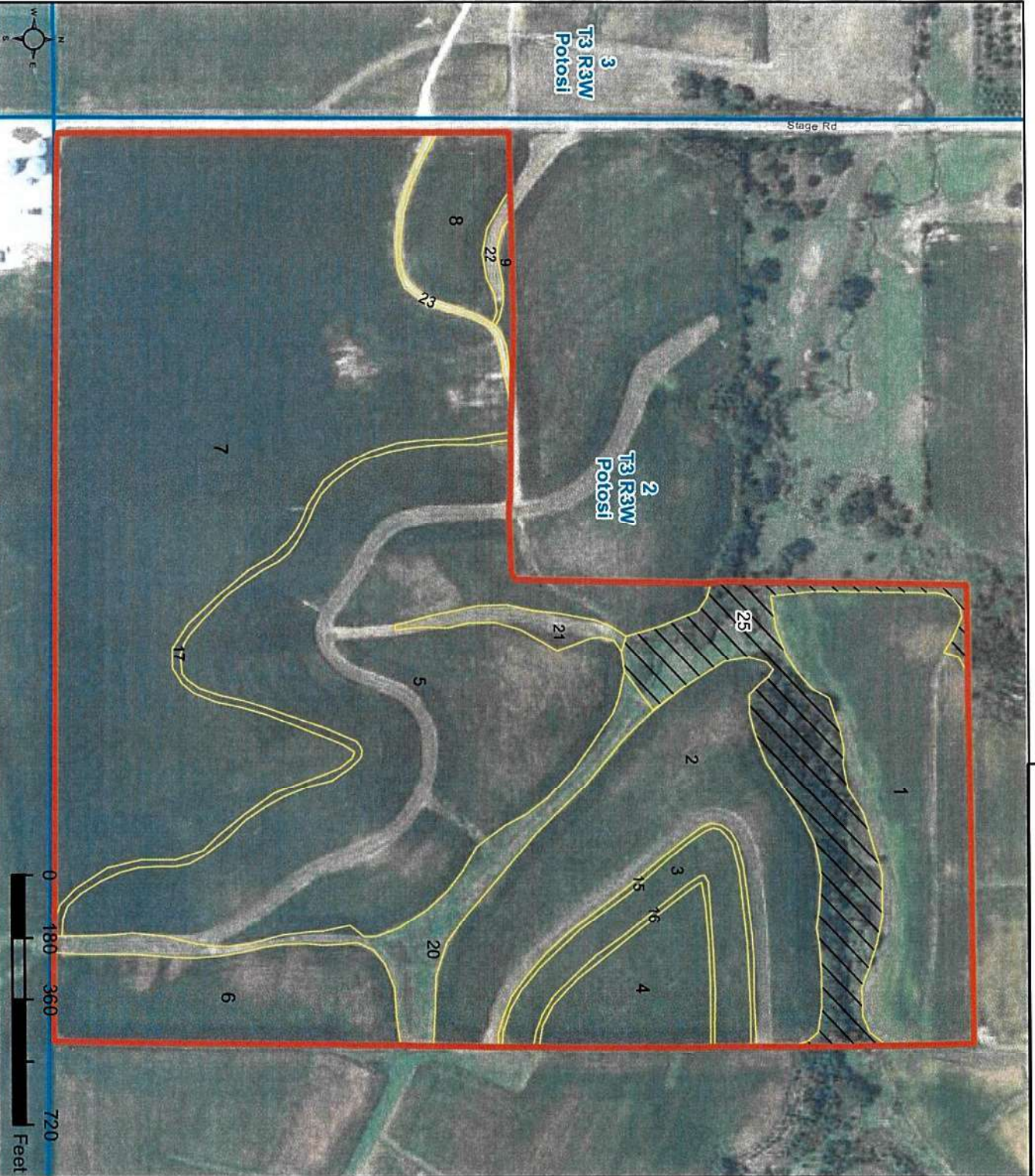


**Farm 9042**  
**Tract 1909**

2018 Program Year

CLU Acres	HEL	Crop
1	10.53	HEL
2	12.2	HEL
3	3.02	HEL
4	3.37	HEL
5	27.81	HEL
6	5.95	HEL
7	39.84	HEL
8	2.9	HEL
9	0.31	HEL
15	0.53	HEL
16	0.39	HEL
17	1.35	HEL
20	3.65	HEL
21	0.83	HEL
22	0.3	HEL
23	0.35	HEL
25	7.12	UHEL NC

Page Cropland Total: 113.33 acres



Map Created January 24, 2018

**Common Land Unit**  
**cropland\_indicator\_3CM**

-  Non-Cropland
-  Cropland
-  Tract Boundary
-  PLS

NAP Imagery 2017

**Wetland Determination Identifiers**

-  Restricted Use
-  Limited Restrictions
-  Exempt from Conservation Compliance Provisions

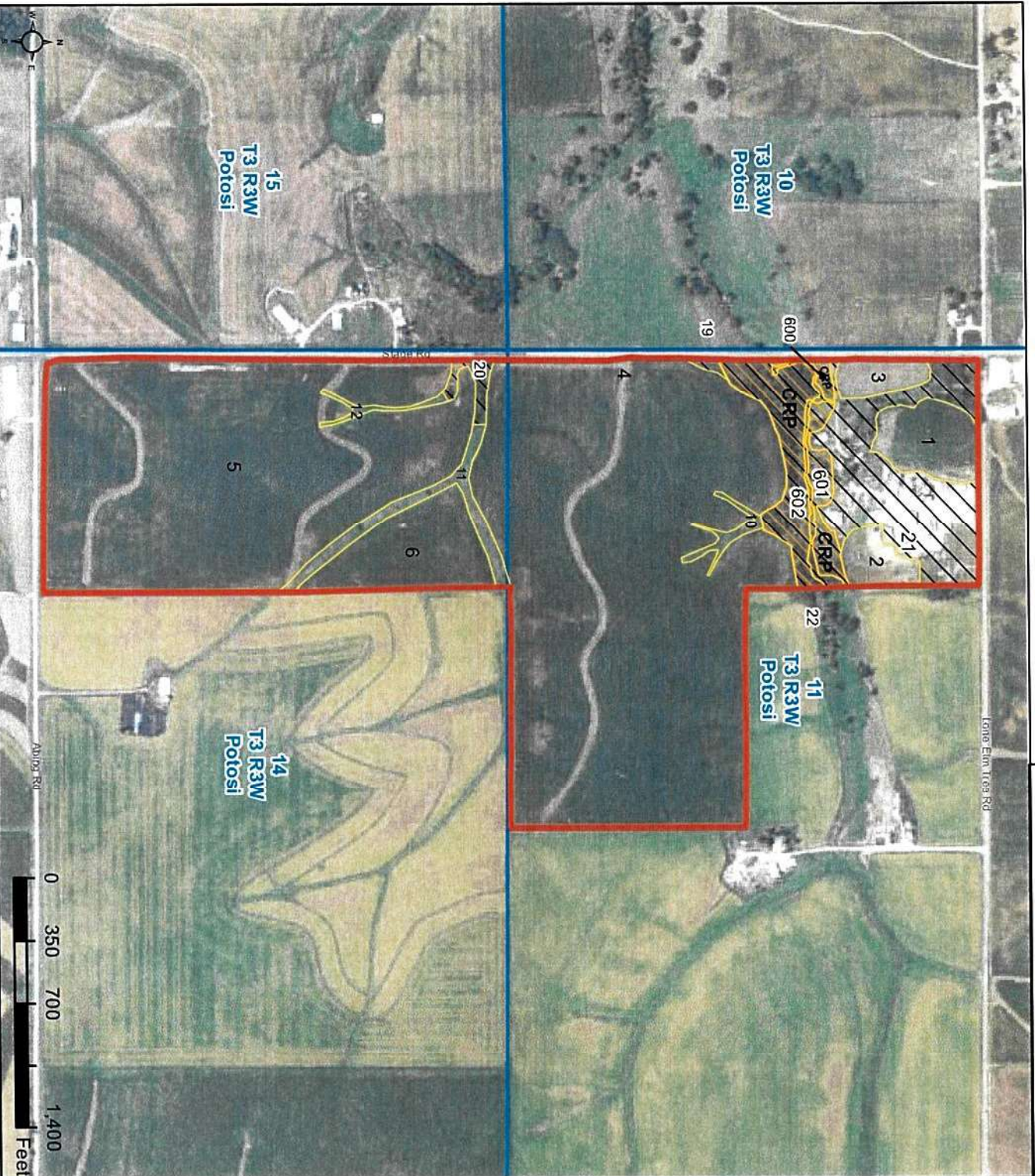
USDA FSA maps are for FSA Program administration only. This map does not represent a legal survey or reflect actual ownership; rather it depicts the information provided directly from the producer and/or the NAP imagery. The producer accepts the data 'as is' and assumes all risks associated with its use. The USDA Farm Service Agency assumes no responsibility for actual or consequential damage incurred as a result of any user's reliance on this data outside FSA Programs. Wetland identifiers do not represent the size, shape, or specific determination of the area. Refer to your original determination (CPA-026 and attached maps) for exact boundaries and determinations or contact NRCS.

**Farm 9042**  
**Tract 1910**

2018 Program Year

CLU Acres	HEL	Crop
1	4.95	HEL
2	2.49	HEL
3	2.18	HEL
4	87.06	HEL
5	60.51	HEL
6	8.7	HEL
10	0.85	HEL
11	3.13	HEL
12	0.58	HEL
19	0.25	UHEL NC
20	0.99	UHEL NC
21	14.3	UHEL NC
22	0.91	UHEL NC
600	0.41	UHEL CRP
601	2.34	UHEL CRP
602	6.02	UHEL CRP

Page Cropland Total: 170.45 acres



Map Created January 24, 2018  
**Common Land Unit**  
**cropland\_indicator\_3CM**

-  Cropland
  -  Non-Cropland
  -  CRP
- NALP Imagery 2017
- Wetland Determination Identifiers**
-  Restricted Use
  -  Limited Restrictions
  -  Exempt from Conservation Compliance Provisions

USDA FSA maps are for FSA Program administration only. This map does not represent a legal survey or reflect actual ownership, rather it depicts the information provided directly from the producer and/or the NALP imagery. The producer accepts the data as is and assumes all risks associated with its use. The USDA Farm Service Agency assumes no responsibility for actual or consequential damage incurred as a result of any user's reliance on this data outside FSA Programs. Wetland identifiers do not represent the size, shape, or specific determination of the area. Refer to your original determination (CPA-026 and attached maps) for exact boundaries and determinations or contact NRCS.

Entire Tract: IR / NI GR / FG unless  
 Name/Shares: \_\_\_\_\_ otherwise  
 labeled

**Farm 9042**  
**Tract 1917**

2018 Program Year

CLU	Acres	HEL	Crop
1	72.86	HEL	
2	21.72	HEL	
3	4.66	HEL	
4	10.82	HEL	
5	26.19	HEL	
6	2.1	HEL	
10	0.55	HEL	
11	1.04	HEL	
12	0.86	HEL	
13	1.41	HEL	
14	2.05	HEL	
15	0.13	HEL	
16	0.34	HEL	
17	0.37	HEL	
20	2.81	UHEL	NC
22	4.82	UHEL	NC
28	0.1	UHEL	NC

Page Cropland Total: 145.1 acres



Map Created January 24, 2018  
**Common Land Unit**  
**cropland\_indicator\_3CM**

-  Non-Cropland
-  Cropland
-  Tract Boundary
-  PLSS
-  NAIIP Imagery 2017
-  Wetland Determination Identifiers
-  Restrictive Use
-  Limited Restrictions
-  Exempt from Conservation Compliance Provisions

USDA FSA maps are for FSA Program administration only. This map does not represent a legal survey or reflect actual ownership; rather it depicts the information provided directly from the producer and/or the NAIIP imagery. The producer accepts the data as is and assumes all risks associated with its use. The USDA Farm Service Agency assumes no responsibility for actual or consequential damage incurred as a result of any user's reliance on this data outside FSA Programs. Wetland identifiers do not represent the size, shape, or specific determination of the area. Refer to your original determination (CPA-026 and attached maps) for exact boundaries and determinations or contact NRCS.

**Farm 9042**  
**Tract 7872**

2018 Program Year

CLU Acres	HEL	Crop
1	5.29	HEL
2	32.58	HEL
3	1.7	HEL

Page Cropland Total: 39.57 acres



Map Created January 25, 2018

**Common Land Unit**  
**cropland\_indicator\_3CM**

- Cropland
- Tract Boundary
- PLS
- PLS
- NAIPL Imagery 2017
- Wetland Determination Identifiers
- Restricted Use
- ▼ Limited Restrictions
- Exempt from Conservation
- Compliance Provisions

USDA FSA maps are for FSA Program administration only. This map does not represent a legal survey or reflect actual ownership; rather, it depicts the information provided directly from the producer and/or the NAIPL imagery. The producer accepts the data as is and assumes all risks associated with its use. The USDA Farm Service Agency assumes no responsibility for actual or consequential damage incurred as a result of any user's reliance on this data outside FSA Programs. Wetland Identifiers do not represent the size, shape, or specific determination of the area. Refer to your original determination (CPA-026 and attached maps) for exact boundaries and determinations or contact NRCS.

Entire Tract: IR / NI GR / FG unless  
Name/Shares: \_\_\_\_\_ otherwise  
labeled

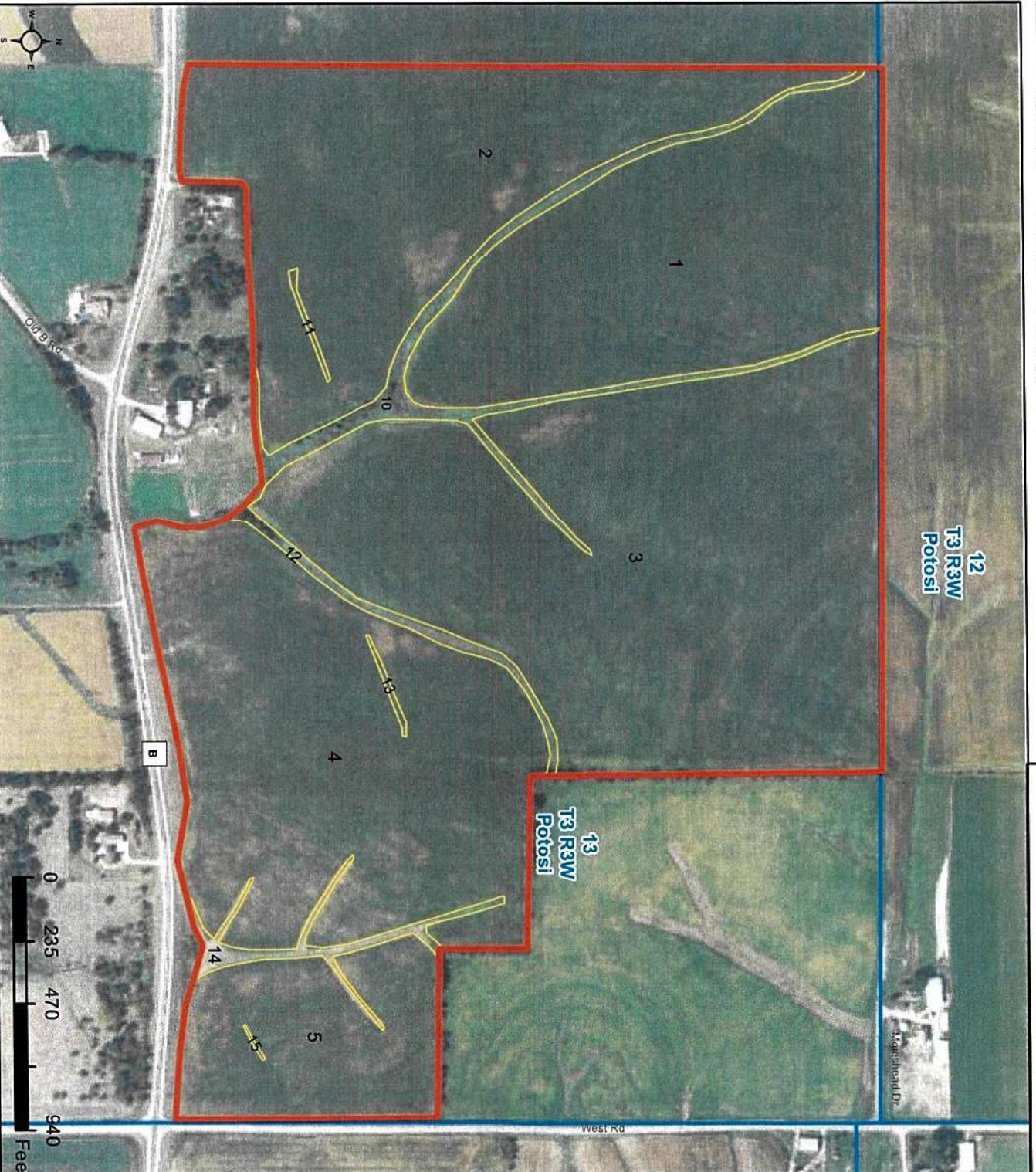
Farm 9042

Tract 10515

2018 Program Year

CLU	Acres	HEL	Crop
1	30.85	HEL	
2	34.06	HEL	
3	58.85	HEL	
4	39.61	HEL	
5	13.16	HEL	
10	4.6	HEL	
11	0.17	HEL	
12	1.37	UHEL	
13	0.14	HEL	
14	1.63	HEL	
15	0.04	HEL	

Page Cropland Total: 184.48 acres



**Common Land Unit**  
**cropland\_indicator\_3CM**

Map Created January 25, 2018

- Cropland
- Tract Boundary
- PLS
- N NAIPL Imagery 2017
- Wetland Determination Identifiers
- Restricted Use
- ▲ Limited Restrictions
- Exempt from Conservation
- Compliance Provisions

USDA FSA maps are for FSA Program administration only. This map does not represent a legal survey or reflect actual ownership; rather it depicts the information provided directly from the producer and/or the NAIPL Imagery. The producer accepts the data as is and assumes all risks associated with its use. The USDA Farm Service Agency assumes no responsibility for actual or consequential damage incurred as a result of any user's reliance on this data outside FSA Programs. Wetland identifiers do not represent the size, shape, or specific determination of the area. Refer to your original determination (CPA-026 and attached maps) for exact boundaries and determinations or contact NRCS.

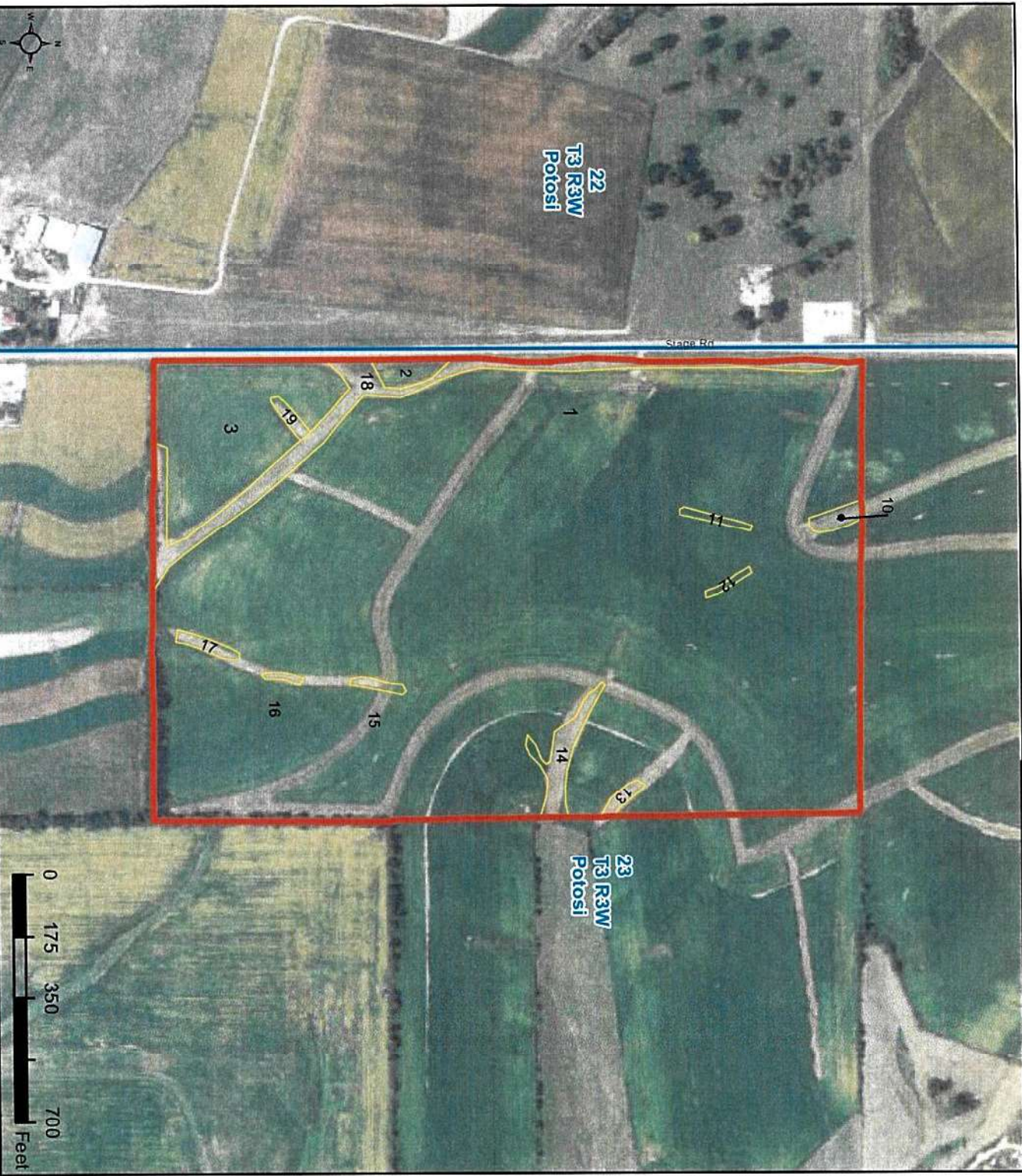
Entire Tract: IR / NI GR / FG unless  
 Name/Shares: \_\_\_\_\_ otherwise  
 labeled

**Farm 9042**  
**Tract 11341**

2018 Program Year

CLU	Acres	HEL	Crop
1	52.07	HEL	
2	0.3	HEL	
3	3.91	HEL	
10	0.18	HEL	
11	0.1	HEL	
12	0.06	HEL	
13	0.12	HEL	
14	0.52	HEL	
15	0.09	HEL	
16	0.05	HEL	
17	0.14	HEL	
18	2.06	HEL	
19	0.11	HEL	

Page Cropland Total: 59.71 acres



Map Created January 25, 2018

**Common Land Unit**  
**cropland\_indicator\_3CM**

- Cropland
  - Tract Boundary
  - PLSS
  - NAP Imagery 2017
- Wetland Determination Identifiers**
- Restricted Use
  - ▲ Limited Restrictions
  - Exempt from Conservation
  - Compliance Provisions

USDA FSA maps are for FSA Program administration only. This map does not represent a legal survey or reflect actual ownership; rather, it depicts the information provided directly from the producer and/or the NAP Imagery. The producer accepts the data 'as is' and assumes all risks associated with its use. The USDA Farm Service Agency assumes no responsibility for actual or consequential damage incurred as a result of any user's reliance on this data outside FSA Programs. Wetland identifiers do not represent the size, shape, or specific determination of the area. Refer to your original determination (CPA-026 and attached maps) for exact boundaries and determinations or contact NRCs.

Entire Tract: IR / NI GR / FG unless  
 Name/Shares: otherwise  
 labeled

**Farm 9042**  
**Tract 11373**  
 2018 Program Year

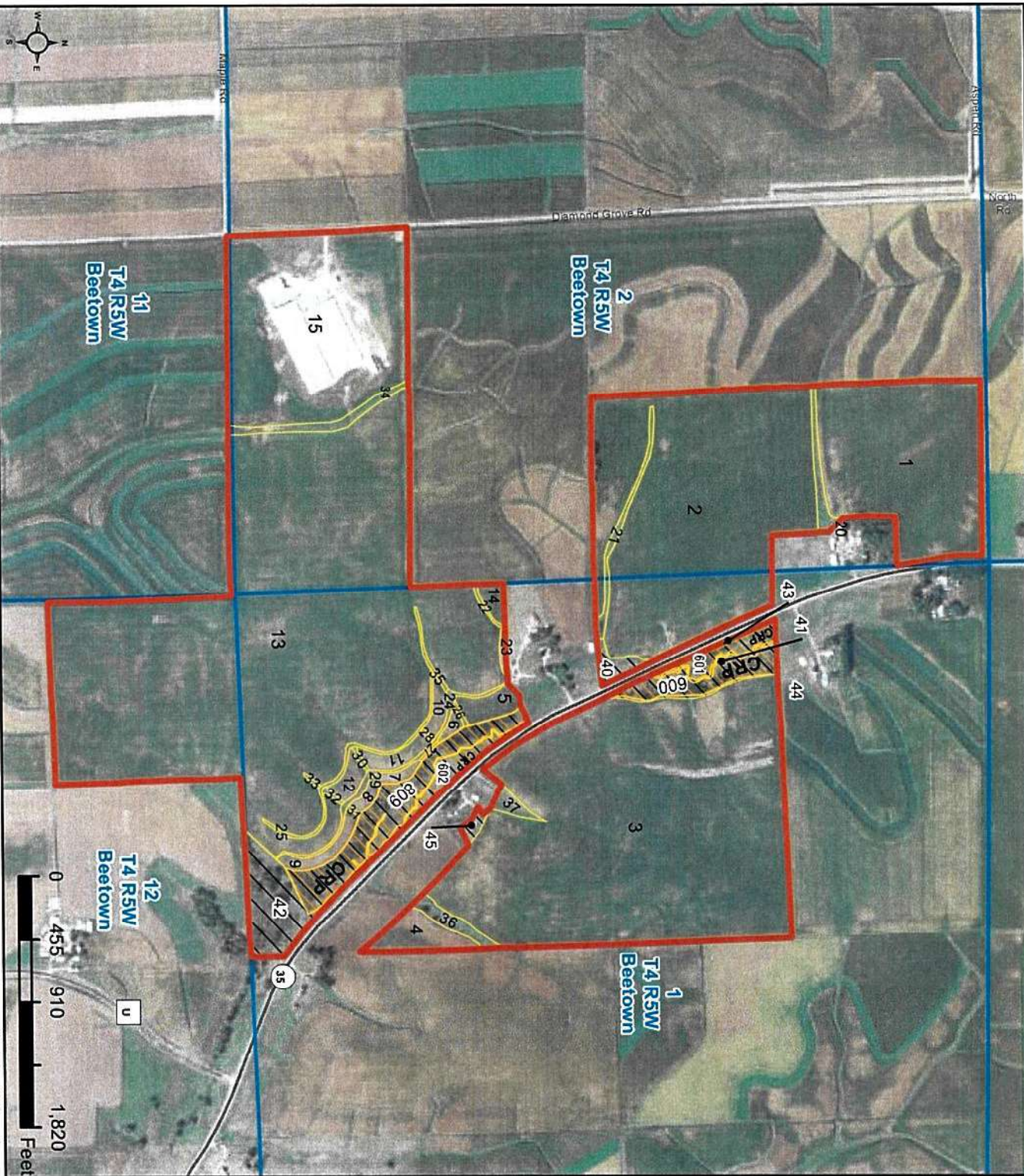
CLU	Acres	HEL	Crop
1	30.23	HEL	
2	59.72	HEL	
3	88.48	HEL	
4	3.36	HEL	
5	1.87	HEL	
6	0.44	HEL	
7	0.6	HEL	
8	0.55	HEL	
9	1.49	HEL	
10	0.96	HEL	
11	1.43	HEL	
12	1.13	HEL	
13	132.08	HEL	
14	0.91	HEL	
15	39.89	HEL	
20	1.37	HEL	
21	1.28	HEL	
22	0.17	HEL	
23	0.31	HEL	
24	1.35	HEL	
25	0.95	HEL	
26	0.14	HEL	
27	0.08	HEL	
28	0.07	HEL	
29	0.08	HEL	
30	0.13	HEL	
31	0.07	HEL	
32	0.14	HEL	
33	0.06	HEL	
34	1.8	HEL	

Page Cropland Total: 373.74 acres

Map Created January 25, 2018

**Common Land Unit**  
**cropland\_indicator\_3CM**

-  Non-Cropland
-  Cropland
-  CRP
-  NALP Imagery 2017
-  Wetland Determination Identifiers
-  Restricted Use
-  Exempt from Conservation
-  Compliance Provisions



USDA FSA maps are for FSA Program administration only. This map does not represent a legal survey or reflect actual ownership; rather it depicts the information provided directly from the producer and/or the NALP imagery. The producer accepts the data as is and assumes all risks associated with its use. The USDA Farm Service Agency assumes no responsibility for actual or consequential damage incurred as a result of any user's reliance on this data outside FSA Programs. Wetland identifiers do not represent the size, shape, or specific determination of the area. Refer to your original determination (CPA-026 and attached maps) for exact boundaries and determinations or contact NRCs.

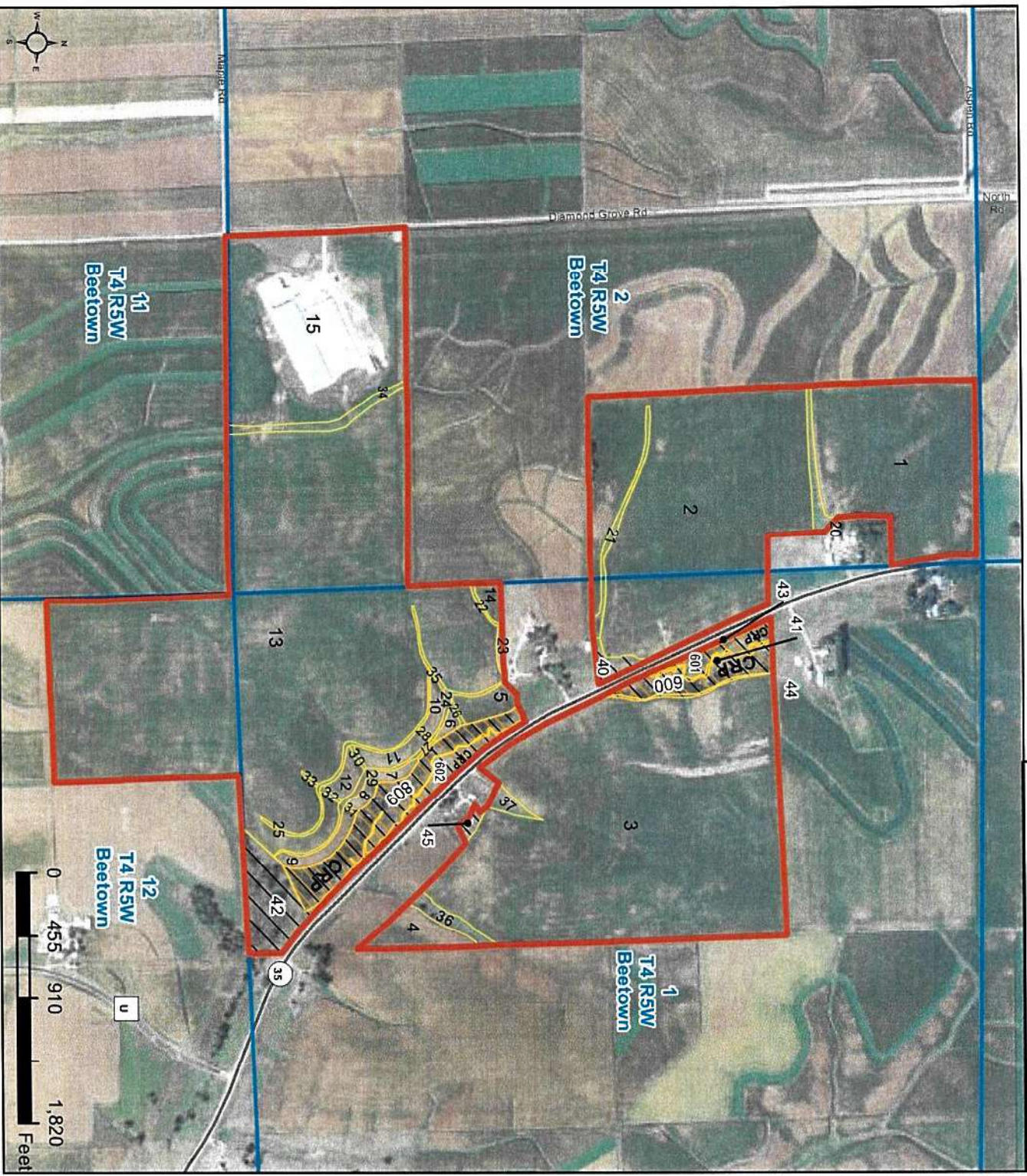
Entire Tract: **IR / NI** GR / FG unless otherwise labeled  
 Name/Shares: \_\_\_\_\_

**Farm 9042**  
**Tract 11373**

2018 Program Year

CLU	Acres	HEL	Crop
35	0.29	HEL	
36	1.45	HEL	
37	0.86	HEL	
40	1.21	UHEL	NC
41	0.46	UHEL	NC
42	7.38	UHEL	NC
43	0.39	UHEL	NC
44	0.44	UHEL	NC
45	0.54	UHEL	NC
600	4.03	UHEL	CRP
601	1.87	UHEL	CRP
602	2.08	UHEL	CRP
809	8.75	UHEL	CRP

Page Cropland Total: 373.74 acres



Map Created January 25, 2018  
**Common Land Unit**  
**cropland\_indicator\_3CM**

-  Non-Cropland
  -  Cropland
  -  CRP
- NAP Imagery 2017
- Wetland Determination Identifiers**
-  Restricted Use
  -  Limited Restrictions
  -  Exempt from Conservation Compliance Provisions

USDA FSA maps are for FSA Program administration only. This map does not represent a legal survey or reflect actual ownership; rather it depicts the information provided directly from the producer and/or the NAP imagery. The producer accepts the data as is and assumes all risks associated with its use. The USDA Farm Service Agency assumes no responsibility for actual or consequential damage incurred as a result of any user's reliance on this data outside FSA Programs. Wetland identifiers do not represent the size, shape, or specific determination of the area. Refer to your original determination (CPA-026 and attached maps) for exact boundaries and determinations or contact NRCS.